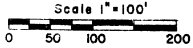


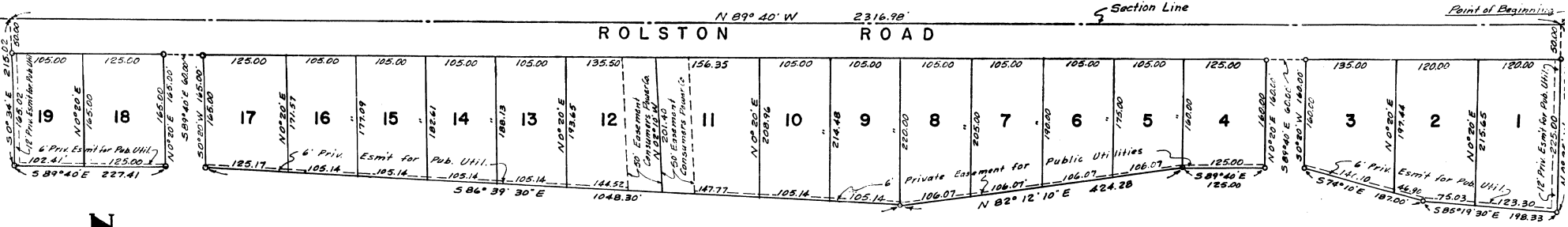
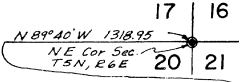
# "LINDEN HEIGHTS # 1"

PART OF THE N 1/2 OF SECTION 20, T5N, R6E  
FENTON TWP., GENESEE CO., MICHIGAN

All dimensions are in feet and decimals thereof.



Pike-Albright Engineering Co.  
Fenton, Mich.



### DESCRIPTION OF LAND PLATTED

The land embraced in the annexed plat of "Linden Heights # 1", a subdivision of part of the N 1/2 of Section 20, T5N, R6E, Fenton Twp., Genesee County, Michigan, is described as follows: Beginning at a point on the Sec. Line N 89° 40' W 1318.98 ft., from the NE Cor. of said Sec. 20, th along the Sec. line N 89° 40' W 2316.98 ft.; th S 0° 34' E 215.02 ft; th S 89° 40' E 227.41 ft., th N 0° 20' E 165.00 ft; th S 89° 40' E 60.00 ft; th S 0° 20' W 165.00 ft; th S 89° 39' 30" E 1048.30 ft; th N 82° 12' 10" E 424.28 ft; th S 89° 40' E 125.00 ft; th N 0° 20' E 160.00 ft; th S 89° 40' E 60.00 ft; th S 0° 20' W 160.00 ft; th S 74° 10' E 187.00 ft; th S 85° 19' 30" E 198.33 ft; th N 0° 28' W 275.00 ft; to the point of beginning, containing 19 lots and no outlots.

### DEDICATION

KNOW ALL MEN BY THESE PRESENTS, that we, Peter Yaskanin and Mary Yaskanin, his wife, as proprietors, have caused the land embraced in the annexed plat to be surveyed, laid out and platted, to be known as "Linden Heights # 1", part of the N 1/2 of Section 20, T5N, R6E, Fenton Township, Genesee County, Michigan, and that the streets as shown on said plat are hereby dedicated to the use of the public, and the easements indicated on said plat are not dedicated to the public, but the right to use said easements is hereby reserved for public utilities and no permanent structures are to be erected within the lines of said easements.

Signed in the Presence of:

*Mary D. Pike*  
.....  
MARY D. PIKE (Witness)  
*Edna Baddy*  
.....  
EDNA BADDY (Witness)

*Peter Yaskanin*  
..... (LS)  
Peter Yaskanin  
*Mary Yaskanin*  
..... (LS)  
Mary Yaskanin

### CERTIFICATE OF MUNICIPAL APPROVAL

This plat was approved by the Township Board of the Township of Fenton at a meeting held August 24, 1960, and that the width of lots is in compliance with requirements of Section 30, Act 172, of 1929, as amended.  
*D. L. McClellan*  
D. L. McClellan, Clerk.

### APPROVAL BY BOARD OF COUNTY ROAD COMMISSIONERS

This plat has been examined and was approved on the 30 day of August, 1960, by the Genesee County Board of Road Commissioners.

*L. R. Lang*  
L. R. LANG (Chairman)  
*A. H. Bergh*  
A. H. BERGH (Member)

### APPROVAL BY COUNTY FLAT BOARD

This plat was approved on the 8th day of September, 1960, by the Genesee County Plat Board  
*Earl M. Smith*  
Earl M. Smith (County Register of Deeds)  
*George G. Dunn*  
George G. Dunn (County Clerk)  
*James P. Barkley*  
James P. Barkley (County Treasurer)  
*B. E. O'Brien*  
B. E. O'Brien (County Drain Commissioner)

### SURVEYOR'S CERTIFICATE

I hereby certify that the plat hereon delineated is a correct one and that permanent metal monuments consisting of bars not less than one-half inch in diameter and 36 inches in length, or shorter bars of not less than one-half inch in diameter tapped over each other at least 6 inches with an over-all length of not less than 36 inches, encased in a concrete cylinder of at least 4 inches in diameter and 36 inches in depth have been placed at points marked thus (O) as thereon shown at all angles in the boundaries of the land platted, at all the intersections of streets, intersections of alleys, or of streets and alleys, and at all the intersections of streets and alleys with the boundaries of the plat as shown on said plat.

*John D. Albright*  
John D. Albright No. 10057  
Registered Land Surveyor

### ACKNOWLEDGMENT

Plat of Linden Heights # 1 STATE OF MICHIGAN  
County of Genesee  
was Recorded this 19th day of August, 1960, before me,  
*John D. Albright*  
Notary Public in and for said County, personally came the above named  
Peter Yaskanin and Mary Yaskanin, his wife  
as proprietors of said plat.

*Edna Baddy*  
Edna Baddy  
Notary Public, Genesee County  
My Commission expires 6-20-61

I hereby certify this copy is a true copy of map as the same is on file in the office of the Register of Deeds for Genesee County, Michigan.  
Filed for Record September 15, 1960  
Filed in Auditor General's Office September 21, 1960  
Approved September 15, 1960  
*D. L. McClellan*  
D. L. McClellan, Notary Public

Plat No. 8-29-60  
Certifying Fee Paid \$1.00  
*James P. Barkley*  
GENESEE COUNTY TREASURER

43250