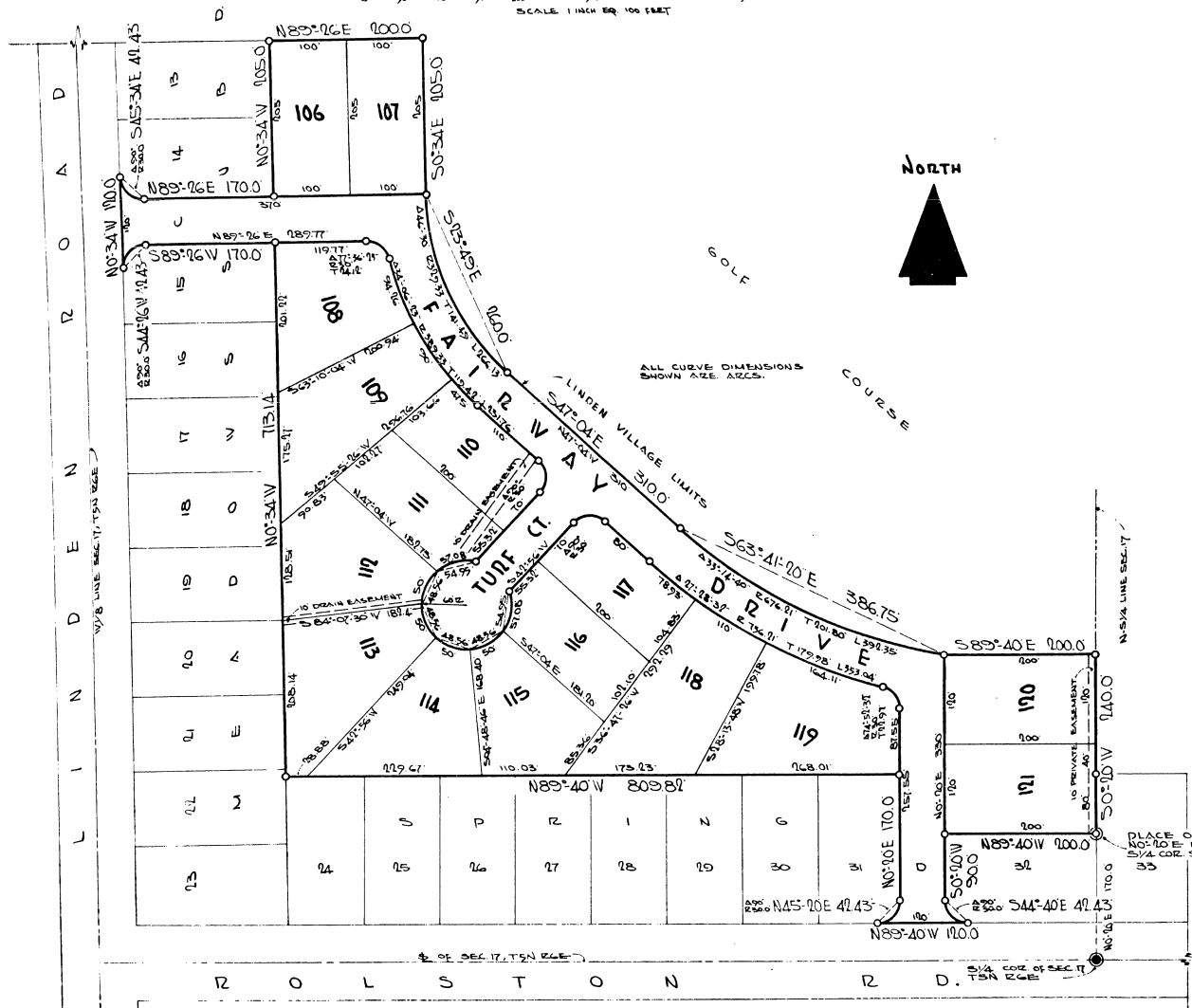
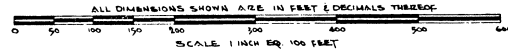


SPRING MEADOWS SUBD. No. 2

PART OF THE SW 1/4 OF SECTION 17, VILLAGE OF LINDEN, T5N 26E, MICHIGAN MERIDIAN, GENESEE COUNTY, MICHIGAN, ALSO A REPLAT OF OUTLOTS C & D OF SPRING MEADOWS SUBD.



WEST ENGINEERING CO. INC.
1625 N. CHEVROLET AVE. FLINT, MICHIGAN

7/2/57

