

I HEREBY CERTIFY THAT THIS COPY IS A TRUE COPY OF THE MAP OR PLAN FORWARDED TO THE REGISTER OF DEEDS FOR RECORDING. COMPARED *[Signature]* COUNTY AUDITOR GENERAL

Examined and Approved *[Signature]* COUNTY AUDITOR GENERAL

FILED IN AUDITOR GENERAL'S DEPT. *[Signature]* COUNTY AUDITOR GENERAL

375

26384

"ASSESSOR'S PLAT No. 1"

OF PARTS OF NW 1/4 and SW 1/4 of SECTION 20, T.5N.R.6E, VILLAGE OF LINDEN, GENESEE CO., MICHIGAN.

0 50' 100' 200'

SCALE

1 INCH = 100 FEET

All dimensions are given in feet and decimals thereof.

DESCRIPTION

The land embraced in the annexed plat of "ASSESSOR'S PLAT No. 1" VILLAGE OF LINDEN, Genesee County, Michigan, is described as follows: BEGINNING at the South-East Corner of the West 1/4 of the North-West 1/4 of Section 20, T.5N.R.6E, Genesee County, Michigan; THENCE North 49° West 32.6 Feet to the North-East Corner of lot 48, "ASSESSOR'S PLAT" Village of Linden, Genesee County, Michigan; THENCE North 68° 47' West 22.5 Feet along the North line of said plat (1/4 line as occupied); THENCE continuing North 68° 47' West 76.0 Feet along said 1/4 line; THENCE North 016° East 116.20 Feet; THENCE North 1° 28' East 174.00 Feet; THENCE North 0° 58' West 175.30 Feet; THENCE North 0° 34' West 262.57 Feet; THENCE North 0° 34' East 30.0 Feet; THENCE South 88° 52' East 30.9 Feet along South line of "MAP OF PART OF VILLAGE OF NORTH LINDEN"; THENCE South 88° 50' East 62.0 Feet; THENCE North 0° 15' East 50.6 Feet; THENCE North 1° 12' East 159.2 Feet; THENCE South 61° 43' East 391.8 Feet along South line of Grand Trunk Railway "FRONT OF WAY"; THENCE South 0° 31' West 78.25 Feet; THENCE North 89° 58' West 320 Feet; THENCE South 0° 15' West 1043.12 Feet along West line of "F.E. CLOSE'S ADDITION"; THENCE North 88° 45' West 297.1 Feet along North line of Village of Linden; THENCE North 0° 17' East 293.85 Feet; THENCE North 88° 15' West 32.6 Feet to Place of Beginning.

BEING PARTS OF NW 1/4 and of E 1/4 of SW 1/4 of Section 20, T.5N.R.6E.

DEDICATION

KNOW ALL MEN BY THESE PRESENTS: - That We RAY L. PARKER SUPERVISOR OF FENTON TOWNSHIP and RUE D. SHIELIFF ASSESSOR OF VILLAGE OF LINDEN by virtue of the authority in us vested by Section 1324B, Compiled Laws of 1929, having been duly authorized by resolutions of TOWNSHIP BOARD OF FENTON TOWNSHIP and of COUNCIL OF VILLAGE OF LINDEN, have caused the land embraced in the annexed plat to be surveyed, laid out and platted to be known as "ASSESSOR'S PLAT No. 1" VILLAGE OF LINDEN, GENESEE COUNTY, MICHIGAN and that the streets as shown on said plat are streets as are now in use in said village.

Signed and Sealed in Presence of *[Signatures]* J. A. Strickland County Clerk (i.s.) Robert B. DeFaulx Notary Public (i.s.)

STATE OF MICHIGAN } ss. County of Genesee }

On this 21st day of May 1935, before me, a Notary Public in and for said county, personally came RAY L. PARKER and RUE D. SHIELIFF known to me to be the person who executed the above dedication and acknowledged the same to be their free act and deed as SUPERVISOR and VILLAGE ASSESSOR respectively.

[Signature] Notary Public, Genesee Co., Mich. My Commission Expires 8-28-1937

CERTIFICATES OF MUNICIPAL APPROVAL

This plat was approved by the Common Council of the Village of Linden at a meeting held *[Date]* 1935.

This plat was approved by the Township Board of Fenton Township at a meeting held *[Date]* 1935.

CERTIFICATE OF APPROVAL (By County Board)

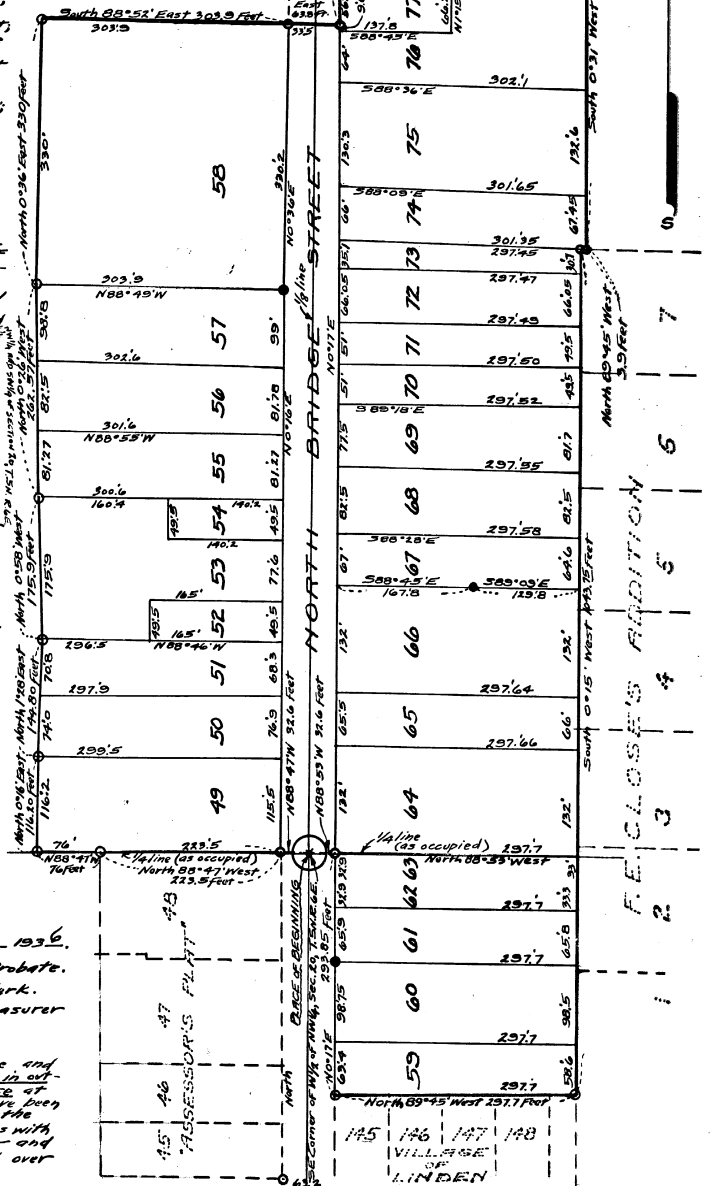
This plat was approved on the 6th day of June 1936. *[Signatures]* Judge of Probate, County Clerk, County Treasurer

SURVEYOR'S CERTIFICATE

I hereby certify that the plat herein delineated is a correct one and that permanent monuments consisting of iron pipe of least one inch in outside diameter and of least fifteen inches long set in a concrete base at least four inches in diameter and four eight inches in depth have been planted at points marked thus *[Symbol]* and shown above at angles in the boundaries of the lands platted and at the intersection of streets with boundaries of the land platted as shown on said plat; and with the boundaries of the land platted as shown on said plat; and at points marked thus *[Symbol]* 100 pipe over one inch in diameter and over eighteen inches long have been set at lot corners.

[Signature] Registered Civil Engineer

"MAP OF PART OF VILLAGE OF NORTH LINDEN"



F.E. CLOSE'S ADDITION

COPY